

# CERTIFICATE OF LOCATION OF GOVERNMENT CORNER

NORTHEAST Corner of Section 28, Township 106, Range 39, 5TH P.M.

STATE OF MINNESOTA, County of MURRAY

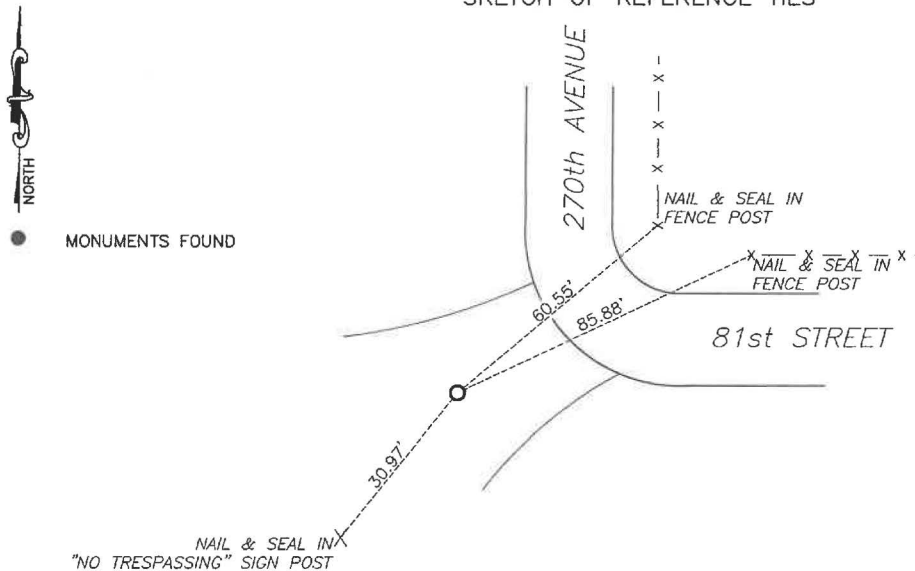
At the corner location shown on the sketch:

☒ On 6/28/2024 found a large 2" pipe.  
DATE

☒ left monument as found, ☐ lowered monument, ☐ removed monument (explain)

☒ On 1/29/2025 placed a 5/8" iron with seal #43844 over 2" pipe.  
DATE

SKETCH OF REFERENCE TIES



Murray County  
Coordinate System NAD83 (1996)  
N: 142398.119  
E: 564255.279

WGS84  
LAT: 43°57'50.7359"  
LON: -95°31'21.5317"

Statement of evidence relative to this corner location is on back of page.

I hereby certify that this document and the data contained herein was prepared by me or under my direct supervision.

Daniel L. Bueltel  
License No. 43844

3/13/2025  
DATE

MAR 13 2025

MURRAY COUNTY RECORDER

Statement of Evidence

NORTHEAST CORNER OF SECTION 28, T106N, R39W OF THE 5th P.M.

In September 1858 W.J. Neely surveyed the east township line.

In July of 1861 J.W. Myers surveyed the north, south, and west township lines.

In August of 1861 Wellman & Smoot subdivided the township.

On June 28, 2024 Bueltel-Moseng Land Surveying found a large 2" pipe at the location of the corner, accepted the pipe as the corner.

Returned on January 29, 2025 and placed a  $\frac{5}{8}$ " iron with seal #43844 over top of the 2" pipe.